



S.M. HYDRAULIC

Mfg & Exporter of Fully Automatic Fly ash Bricks & Paver Block Machine
All Type of Hydraulic & Construction Machinery & MS / Rubber Mould



About us

Who we are ?

We S.M. Hydraulic leading manufacturer & exporter of full automatic fly ash bricks & interlocking paver block making machine as well refractory castable pan mixer & refractory fire bricks cutting machine based in morbi gujarat india. We have experience in machinery production which is considered for eco friendly housing projects worldwide, we are proud to be a largest manufacturer in gujarat.

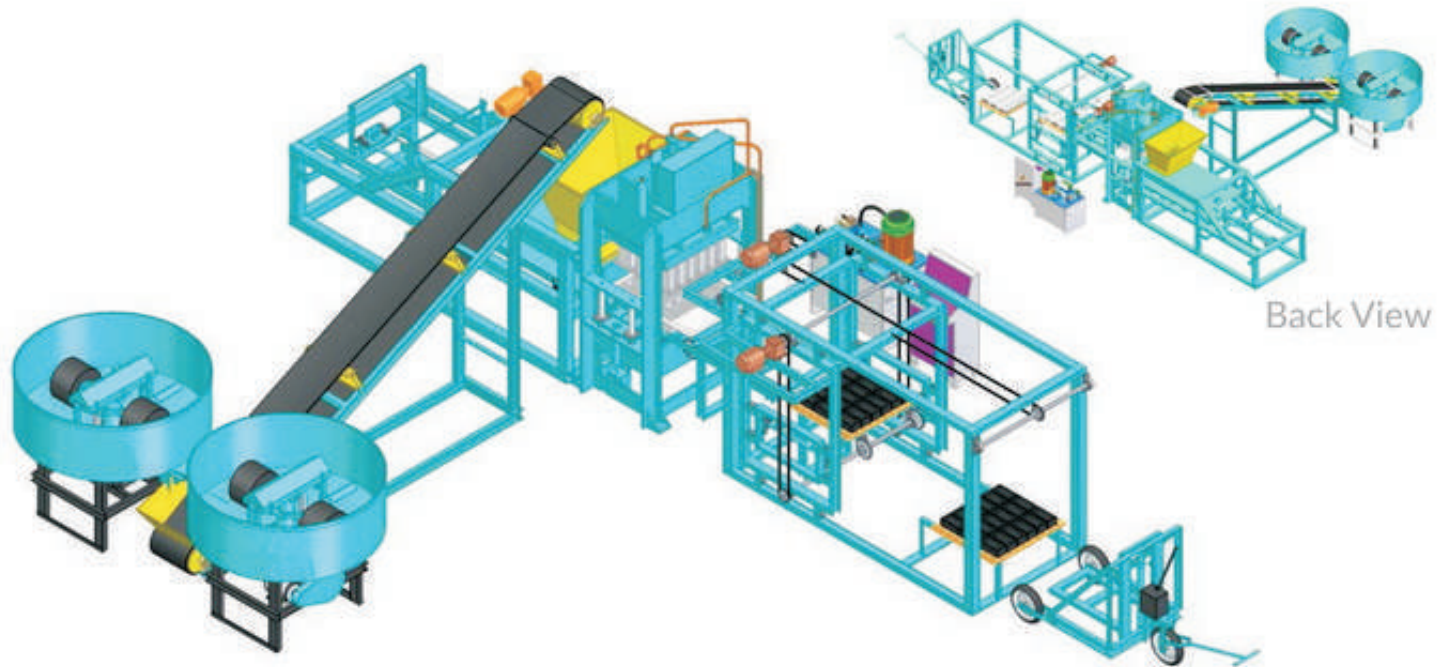
Company established in 2024 under the supervision of Mr. Pravin Hadiyal who has a 17 year experience in the machinery of fly ash brick & paver block machine as refractory castable pan mixer & refractory fire bricks cutting machinery working with we are well qualified in machinery manufacturing & marketing so we can cover good market.

Our machine are manufactured using best quality parts & technology at our work shop under direction of well qualified technical staff. We design & develop machine as per the client requirement as we believe in international standard quality Our satisfied client based in all over india & all other contry also S.M. Hydraulic is a top machinery mfg in gujarat and good prestige in market so you can rest assured about quality of machine.

S.M. Hydraulic machinery range starter from Fully Automatic bricks & paver block machine, semi automatic bricks, block & paver block machine, Manual bricks, block & paver block making machine, refractory castable pan mixer & refractory fire bricks cutting machine & all type of construction machinery & ms Mould, PVC Rubber Mould, Colour, Chemical Etc..

Model - SMH-01

Fully Automatic Fly-Ash Bricks & Blocks Making Machine

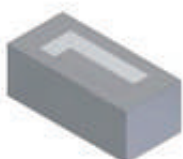


Model - SMH-01 - Technical Specification

Cylinder Tonnage Capacity	250 Tonage	Oil Tank Capacity	600 To 650 Ltr (68 no. Hydraulic Oil)
Cylinder Dia	250 x 350 mm	Vibration	5000 Hz Amplitude Adjustable
Total Power	41Hp / 30.55KW	Voltage Required	380V / 415V / 440V
Pcs Per Stroke	18 Pcs Bricks	Cycle Period	18 to 20 second per stock
Stacker System	YES Motor 6Hp	Plant Dimension	L 1080 cm, P 900 cm, H 300 cm
Operating System	PLC Panel Board	Plate Dimension	92 x 82 cm
Main Technology	Hydraulic Hi-Pressure With Vibration	Total Machine Weight	9000 to 10000 Kg

Production Detail

Bricks	230 X 100 X 75 mm 18Kvt	3240 Pcs/Hour	Zigzag Paver	220 X 112 X 80 mm 15Kvt	2700 Pcs/Hour
Solid Block	400 X 200 X 200 mm 3Kvt	540 Pcs/Hour	I shape Paver	200 X 165 X 60 mm 9Kvt	1620 Pcs/Hour



Fly Ash Bricks



Solid Block



Hollow Block



Zigzag Paver

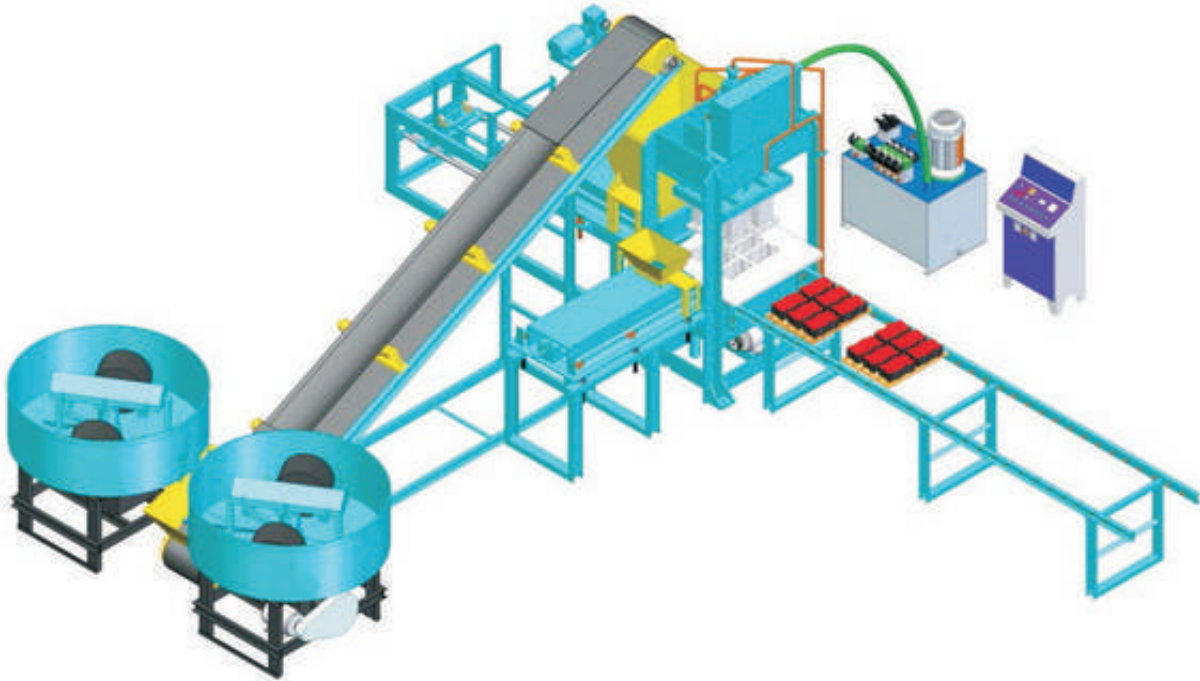


I Shape Paver



Model - SMH-02

Fully Automatic Paver Block & Bricks Macking Machine



Model - SMH-02 - Technical Specification

Cylinder Tonnage Capacity	150 Tonage	Oil Tank Capacity	400 To 450 Ltr (68 no. Hydraulic Oil)
Cylinder Dia	150 x 250 mm	Vibration	5000 Hz Amplitude Adjustable
Total Power	29Hp / 21.6KW	Voltage Required	380V / 415V / 440V
Pcs Per Stroke	6 Pcs Zigzag	Cycle Period	25 to 30 second per stock
Stacker System	As per requirement (Extra)	Plant Dimension	L 750 cm, P 840 cm, H 300 cm
Operating System	PLC Panel Board	Plate Dimension	61 x 66 cm
Main Technology	Hydraulic Hi-Pressure With Vibration	Total Machine Weight	6750 to 7250 Kg

Production Detail

Bricks	230 X 100 X 75 mm 10Kvt	1800 Pcs/Hour	Zigzag Paver	220 X 112 X 80 mm 8Kvt	1440 Pcs/Hour
Solid Block	400 X 200 X 200 mm 2Kvt	360 Pcs/Hour	I shape Paver	200 X 165 X 60 mm 6Kvt	1080 Pcs/Hour



Fly Ash Bricks



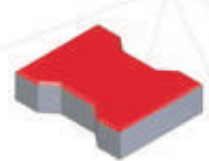
Solid Block



Hollow Block



Zigzag Paver

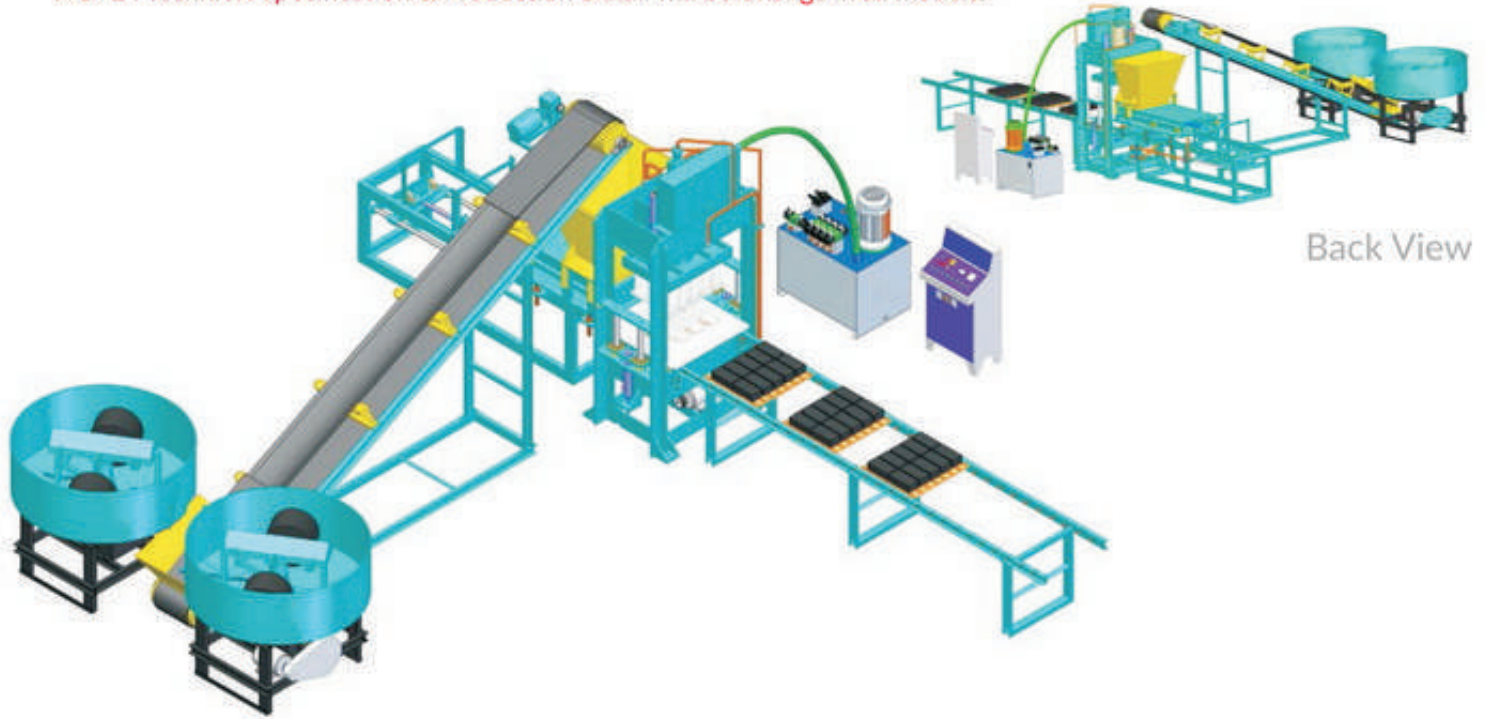


I Shape Paver

Model - SMH-03 / SMH-04 / SMH-05

Fully Automatic Fly-Ash Bricks & Block Macking Machine

NOTE : Technical Specification & Production Detail will be Change in all models.

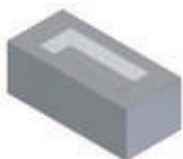


Model - SMH-03 - Technical Specification

Cylinder Tonnage Capacity	110 Tonage	Oil Tank Capacity	400 To 450 Ltr (68 no. Hydraulic Oil)
Cylinder Dia	150 x 250 mm	Vibration	5000 Hz Amplitude Adjustable
Total Power	24Hp / 17.9KW	Voltage Required	380V / 415V / 440V
Pcs Per Stroke	10 Pcs Bricks	Cycle Period	18 to 20 second per stock
Stacker System	As per requirement (Extra)	Plant Dimension	L 750 cm, P 840 cm, H 300 cm
Operating System	PLC Panel Board	Plate Dimension	61 x 66 cm
Main Technology	Hydraulic Hi-Pressure With Vibration	Total Machine Weight	6500 to 7000 Kg

Production Detail

Bricks	230 X 100 X 75 mm 10Kvt	1800 Pcs/Hour	Zigzag Paver	220 X 112 X 80 mm 8Kvt	1440 Pcs/Hour
Solid Block	400 X 200 X 200 mm 2Kvt	360 Pcs/Hour	I shape Paver	200 X 165 X 60 mm 6Kvt	1080 Pcs/Hour



Fly Ash Bricks



Solid Block



Hollow Block



Zigzag Paver

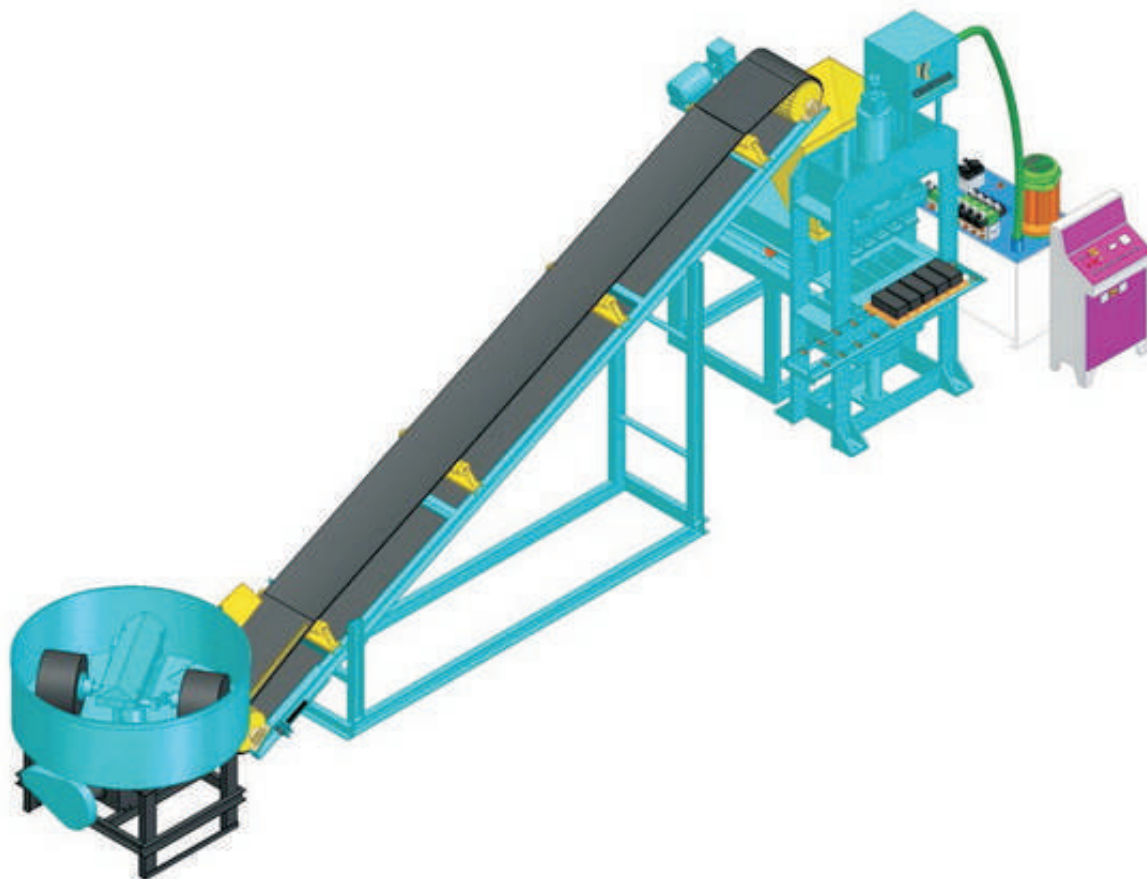


I Shape Paver



Model - SMH-06

Fully Automatic Fly-Ash Bricks Macking Machine



Model - SMH-06 - Technical Specification

Cylinder Tonnage Capacity	70 Tonage	Oil Tank Capacity	300 To 350 Ltr (68 no. Hydraulic Oil)
Cylinder Dia	125 x 180 mm	Cycle Period	10 second per stock
Total Power	19.5Hp / 14.5KW	Voltage Required	380V / 415V / 440V
Pcs Per Stroke	5 Pcs Bricks	Plant Dimension	L 840 cm, P 300 cm, H 270 cm
Operating System	PLC Panel Board	Plate Dimension	31 x 69 cm
Main Technology	Hydraulic Hi-Pressure	Total Machine Weight	3000 to 3500 Kg

Production Detail

Bricks	230 X 100 X 75 mm 5Kvt	1800 Pcs/Hour
Solid Block	400 X 200 X 200 mm 1Kvt	360 Pcs/Hour



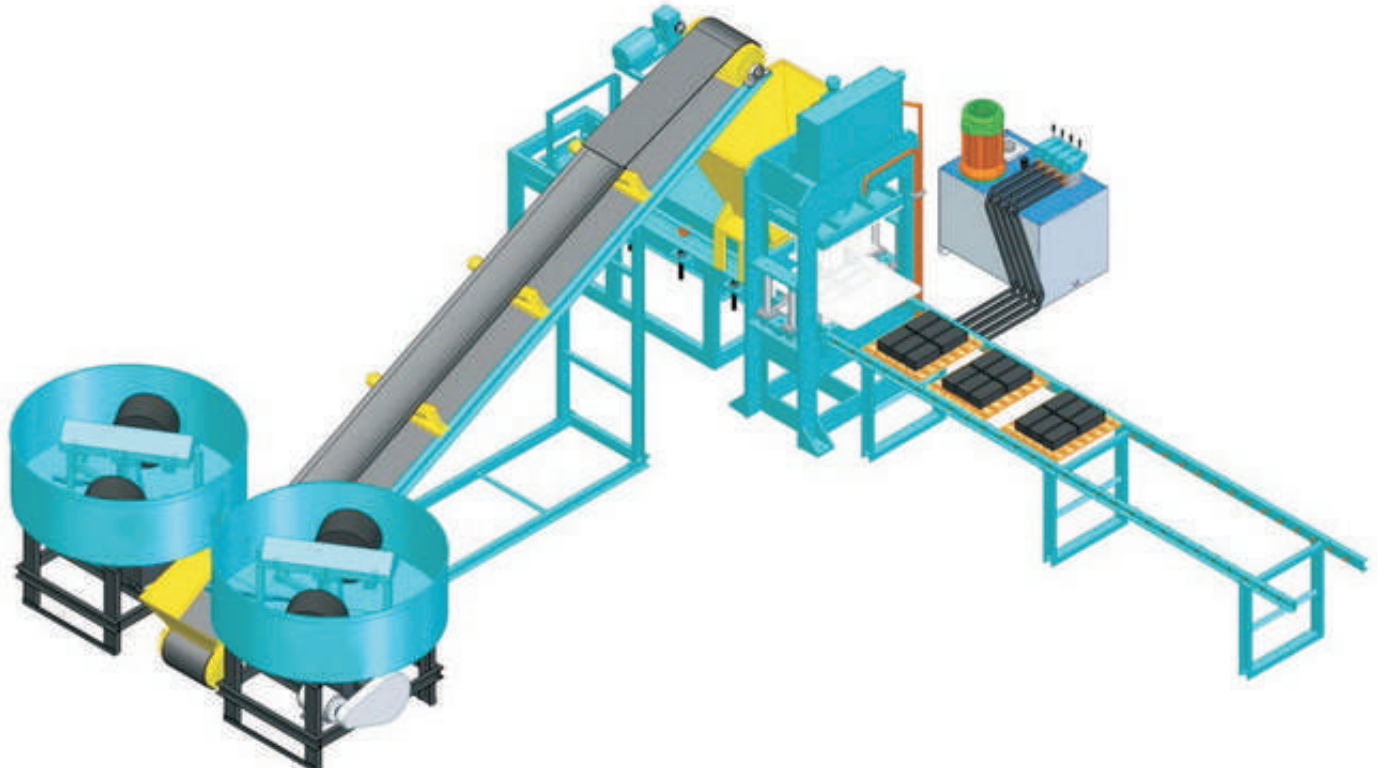
Fly Ash Bricks



Solid Block

Model - SMH-07

Semi Automatic Fly-Ash Bricks Macking Machine

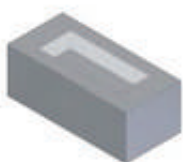


Model - SMH-07 - Technical Specification

Cylinder Tonnage Capacity	70 Tonnage	Oil Tank Capacity	350 To 400 Ltr (68 no. Hydraulic Oil)
Cylinder Dia	125 x 180 mm	Cycle Period	25 to 30 second per stock
Total Power	19.5Hp / 14.5KW	Voltage Required	380V / 415V / 440V
Pcs Per Stroke	6 Pcs Bricks	Plant Dimension	L 750 cm, P 840 cm, H 300 cm
Operating System	Semi Auto	Plate Dimension	61 x 66 cm
Main Technology	Hydraulic Hi-Pressure With Vibration	Total Machine Weight	6000 to 6500 Kg

Production Detail

Bricks	230 X 100 X 75 mm 6Kvt	720 Pcs/Hour	Zigzag Paver	220 X 112 X 80 mm 4Kvt	480 Pcs/Hour
Solid Block	400 X 200 X 200 mm 2Kvt	240 Pcs/Hour	I shape Paver	200 X 165 X 60 mm 4Kvt	480 Pcs/Hour



Fly Ash Bricks



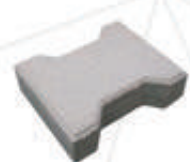
Solid Block



Hollow Block



Zigzag Paver

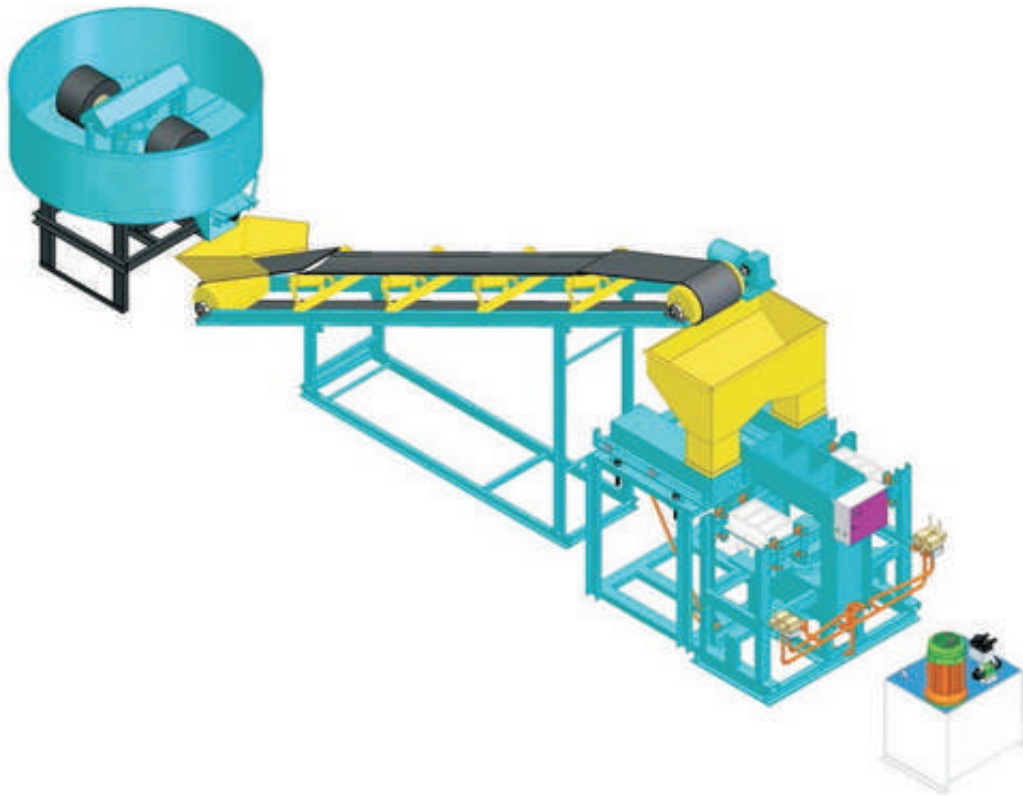


I Shape Paver



Model - SMH-08

Semi Automatic Fly-Ash Bricks & paver Blocks Machine



Model - SMH-08 - Technical Specification

Cylinder Tonnage Capacity	70 Tonage	Main Technology	Hydraulic Hi-Pressure
Cylinder Dia	200 mm	Oil Tank Capacity	250 To 300 Ltr (68 no. Hydraulic Oil)
Total Power	14.5Hp / 10.80KW	Cycle Period	25 to 30 second per stock
Pcs Per Stroke	3 Pcs Bricks	Plant Dimension	L 840 cm, P 165 cm, H 270 cm
Operating System	Semi Auto	Total Machine Weight	3000 to 3500 Kg

Production Detail

Bricks	230 X 100 X 75 mm 3Kvt	360 Pcs/Hour	I shape Paver	200 X 165 X 60 mm 2Kvt	240 Pcs/Hour
Zigzag Paver Block	220 X 112 X 80 mm 2Kvt	240 Pcs/Hour			



Fly Ash Bricks



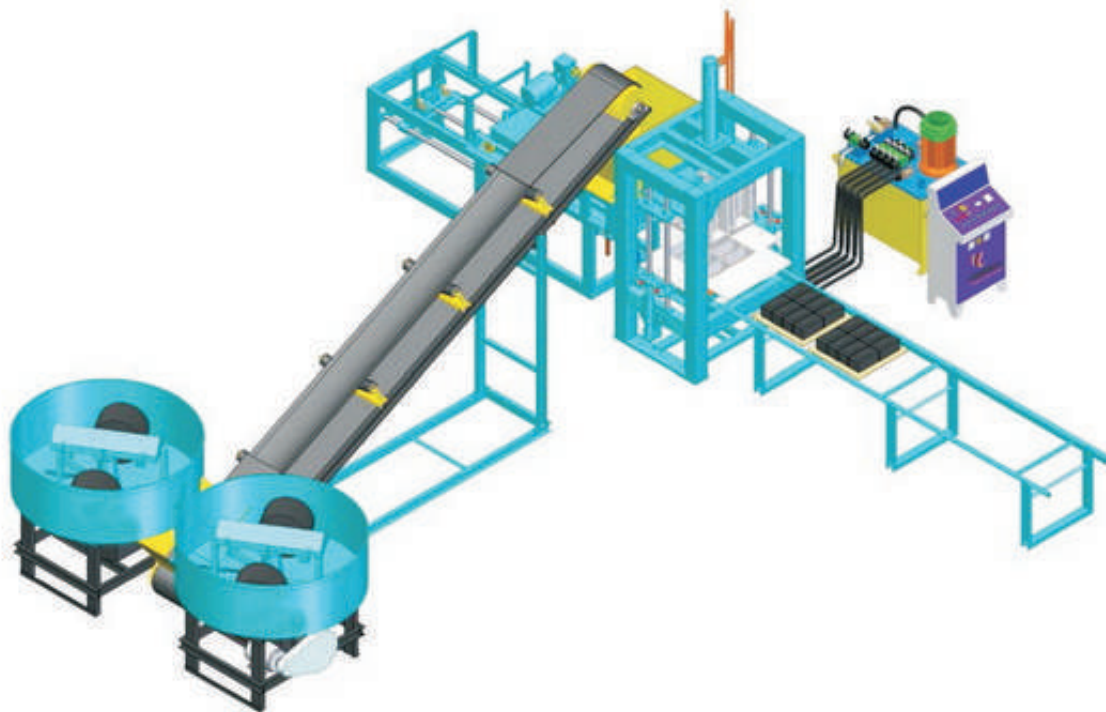
Zigzag Paver



I Shape Paver

Model - SMH-09

High Vibration Low Pressure Fully Auto Machine

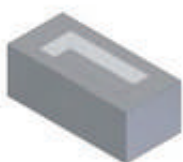


Model - SMH-09 - Technical Specification

Cylinder Tonnage Capacity	40 Tonnage	Oil Tank Capacity	350 To 400 Ltr (68 no. Hydraulic Oil)
Cylinder Dia	125 mm	Vibration	75-95 Hz
Total Power	25Hp / 18.6KW	Voltage Required	380V / 415V / 440V
Pcs Per Stroke	8 Pcs Bricks	Cycle Period	18 to 20 second per stock
Stacker System	As per requirement (Extra)	Plant Dimension	L 690 cm, P 810 cm, H 210 cm
Operating System	PLC Panel Board	Plate Dimension	56 x 61 cm
Main Technology	Hydraulic Hi-Pressure With Vibration	Total Machine Weight	3500 to 3800 Kg

Production Detail

Bricks	230 X 100 X 75 mm 8Kvt	1440 Pcs/Hour	Zigzag Paver	220 X 112 X 80 mm 6Kvt	1080 Pcs/Hour
Solid Block	400 X 200 X 200 mm 8Kvt	360 Pcs/Hour	I shape Paver	200 X 165 X 60 mm 6Kvt	1080 Pcs/Hour



Fly Ash Bricks



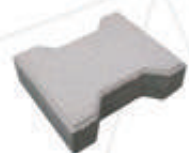
Solid Block



Hollow Block



Zigzag Paver

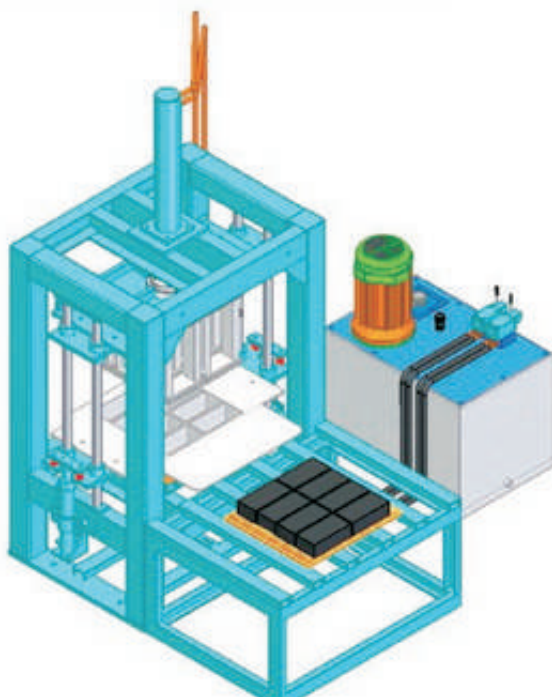


I Shape Paver



Model - SMH-10

Manual Operated High Vibration Low Pressure Machine For Fly-Ash Bricks & Block

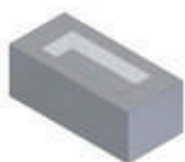


Model - SMH-10 - Technical Specification

Cylinder Tonnage Capacity	40 Tonnage	Oil Tank Capacity	200 To 250 Ltr (68 no. Hydraulic Oil)
Cylinder Dia	125 mm	Vibration	75-95 Hz
Total Power	13Hp / 9.7KW	Voltage Required	380V / 415V / 440V
Pcs Per Stroke	8 Pcs Bricks	Cycle Period	25 to 30 second per stock
Stacker System	-	Plant Dimension	L 130 cm, P 210 cm, H 200 cm
Operating System	Semi Auto	Plate Dimension	56 x 61 cm
Main Technology	Hydraulic Hi-Pressure With Vibration	Total Machine Weight	1700 to 1800 Kg

Production Detail

Bricks	230 X 100 X 75 mm 8Kvt	960 Pcs/Hour	Zigzag Paver	220 X 112 X 80 mm 6Kvt	1080 Pcs/Hour
Solid Block	400 X 200 X 200 mm 2Kvt	240 Pcs/Hour	I shape Paver	200 X 165 X 60 mm 6Kvt	1080 Pcs/Hour



Fly Ash Bricks



Solid Block



Hollow Block



Zigzag Paver

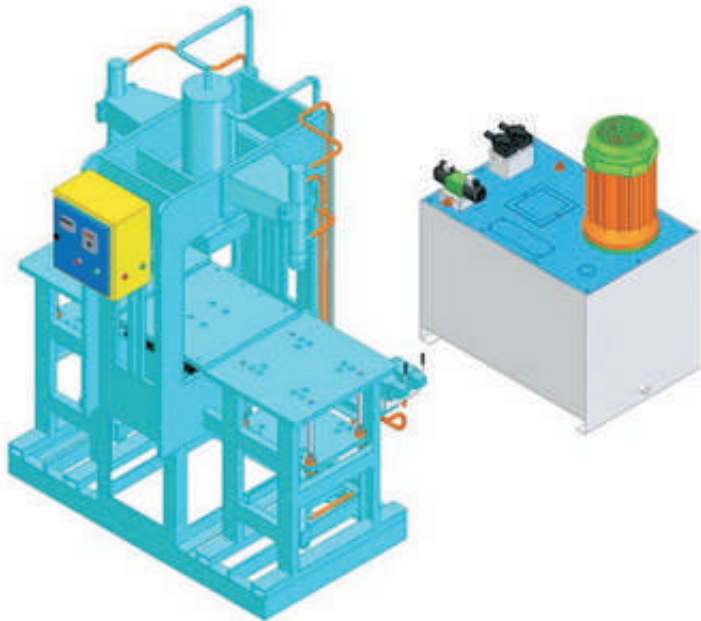


I Shape Paver



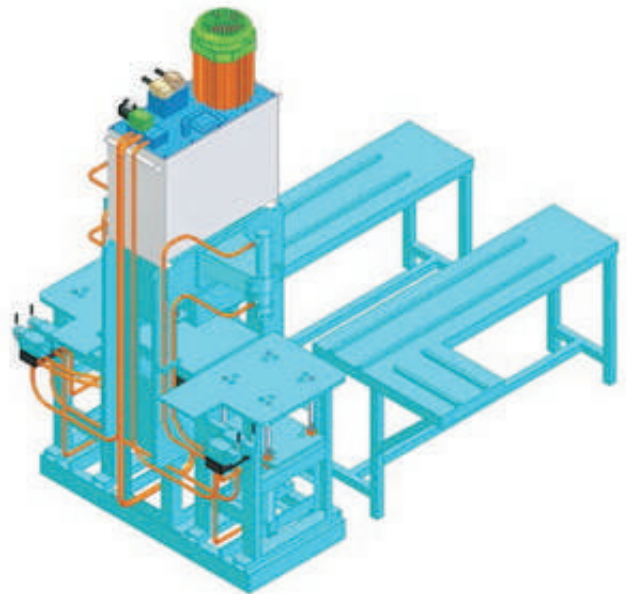
Model - SMH-11

Vibro With High Pressure
Paver Block Macking Machine



Model - SMH-12

High Pressure Paver Block
Macking Machine

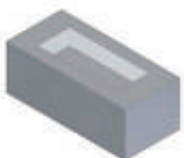


Model - SMH-11 - Technical Specification

Cylinder Tonnage Capacity	70 Tonnage
Cylinder Dia	150 x 200 mm
Total Power	9.5Hp / 7.07KW
Pcs Per Stroke	1 Pcs Bricks
Pressing Operation	Timer Control Auto Stop
Operating System	Manual
Oil Tank Capacity	200 to 250 Ltr (68 no. Hydraulic Oil)
Vibration	5000 Hz amplitude Adjustable
Plant Dimension	L 132 cm, P 264 cm, H 250 cm
Production	1500 to 2000 Pcs
Total Machine Weight	1500 to 1700 Kg

Model - SMH-12 - Technical Specification

Cylinder Tonnage Capacity	40 / 70 Tonnage
Cylinder Dia	200 mm
Total Power	5 / 7.5Hp & 3.7 / 5.6 KW
Pcs Per Stroke	1 Pcs Bricks
Operating System	Manual
Paver Thickness Capacity	Paver 25mm-100mm
Chequered Size Capacity	Chequered 375x375mm - 450x450mm
Oil Tank Capacity	125/100 Ltr (68 No. Hydraulic Oil)
Plant Dimension	L 132 cm, P 264 cm, H 250 cm
Production	1500 to 2000 Pcs
Total Machine Weight	1500 to 1700 Kg



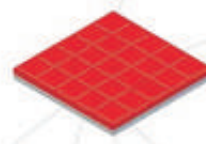
Fly Ash Bricks



Kerb Stone



COsmic Paver



Chequard Tiles

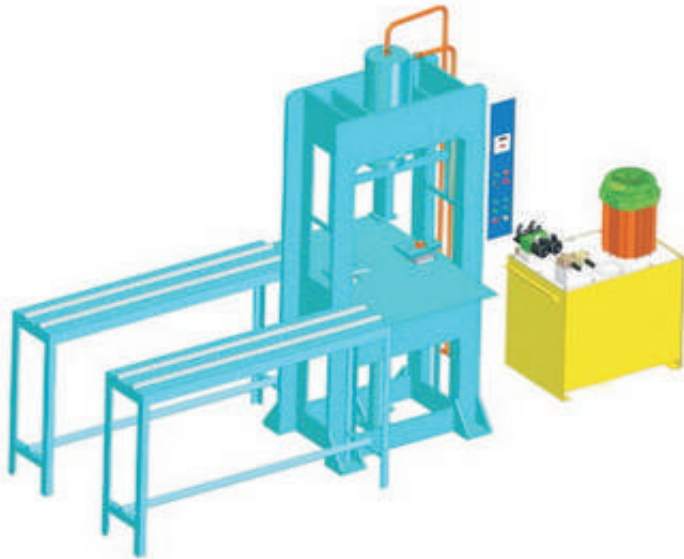


Damru Paver

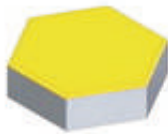


Model - SMH-13

D Moulding Machine



Cosmic Paver



Hexagon Paver



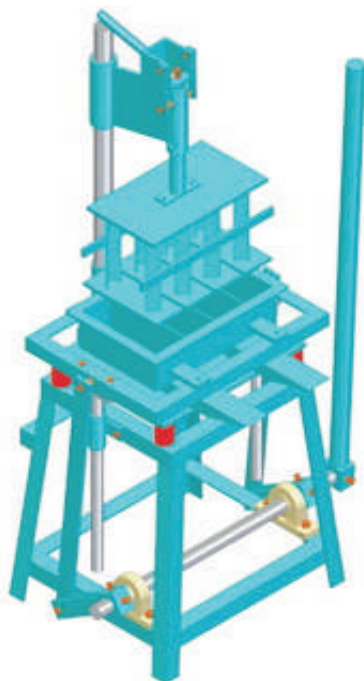
Damru Paver

Model - SMH-13 - Technical Specification

Cylinder Tonnage Capacity	70 /100 Tonnage
Total Power	5Hp / 3.7 KW & 7.5Hp / 5.6KW
Mfg. Capacity	40mm-100mm
Pcs Per Stroke	1 Pcs
Technology	Center Demoulding System
	Suprior Pressing System
	Oil Cooling System
	Single Switch Timer Auto Stop Control
Oil Tank Capacity	300 Ltr (68 no. Hydraulic Oil)
Plant Dimension	L 240 cm. P 120 cm, H 255 cm
Production	3500 to 4000 Pcs
Total Machine Weight	1400 to 1500 Kg

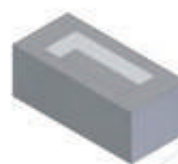
Model - SMH-14

Manual Movable Concrete Block Making Machine



Model - SMH-14 - Technical Specification

Special Vibrator Motor	1Hp / 0.75KW
Production in Shift of 8 Hours	Block 800-1000 Pcs.
Production in Shift of 8 Hours	Bricks 3000-4000 Pcs.
Type of Control	Manual



Fly Ash Bricks



Solid Block

Model - SMH-15

Colour Drum Mixing Machine >>



Model - SMH-15 - Technical Specification

Total Power	2Hp / 1.5 KW
Manufacturing Storage Capacity	150 Kg/ Batch
Application	For Mixing Dry Oxide Colours for 1st Layer of Paver Blocks
Machine Size	L 132 cm, P 83 cm, H 152 cm
Total Weight	200 to 225kg

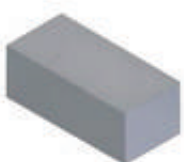
Model - SMH-16

Vibrator Table Machine For Paver Block >>



Model - SMH-16 - Technical Specification

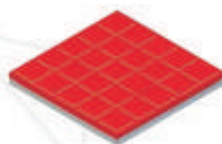
Total Power Required	2Hp / 1.5 KW
Production in Shift of 8 Hours	1500 to 1800 sq. Ft
Table Size	10x3 Sq Ft & 9x3 Sq Ft
Application	For Making Paver Blocks Thgrough Rubber/PVC Mould
Machine size	L 350 cm, P 92 cm, H 85 cm
Total Weight	350 to 400kg



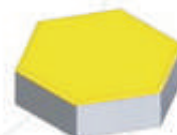
Fly Ash Bricks



Kerb Stone



Chequard Tiles



Hexagon Paver



Damru Paver



Model - SMH-17

Pan Mixer Machine For Mixing Cement, Sand & Concrete

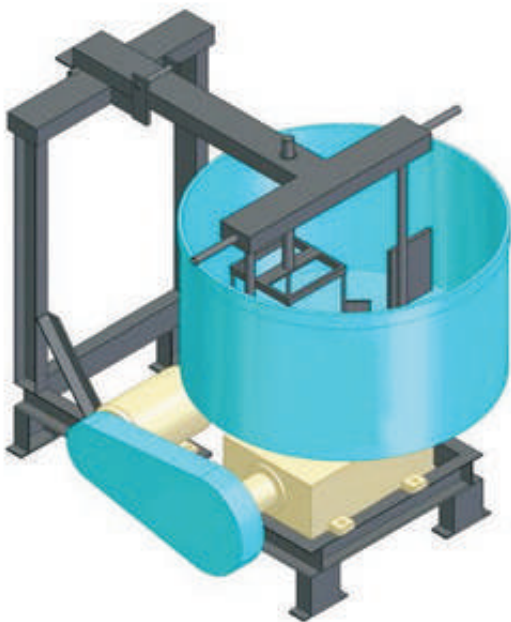


Model - SMH-17 - Technical Specification

Total Power Required	5Hp / 7.5Hp (As Per Requirements)
Material Storage Capacity	400 to 500 Kg / batch
Application	Mixing raw material of Concrete, Sand Cement 2nd layer of paver block by heavy hand blade & Scraper
Machine size	L 170 cm, P 153 cm, H 121 cm
Total Weight	600 to 650kg

Model - SMH-18

Color Mixer Machine For Top Colour Layer Of Paver Blocks



Model - SMH-18 - Technical Specification

Total Power Required	2Hp / 1.5 KW
Material Storage Capacity	80 to 100 Kg
Application	For Color Mixing Top Colour Cement 2nd layer of paver
Utility	Fast & Accurate Colour Mixing
Machine size	L 127 cm, P 80 cm, H 100 cm
Total Weight	260 to 290 kg

S.M. HYDRAULIC



Model - SMH-19

Roller Pan Mixer



Model - SMH-19 - Technical Specification

Total Power Required	5Hp / 7.5Hp (As Per Requirements)
Material Storage Capacity	400 / 500 Kg/batch
Application	Mixing raw material of Concrete, Sand Cement 2nd layer of paver block by heavy roller & blade
Machine size	L 170 cm, P 153 cm, H 121 cm
Total Weight	650 to 700 kg

Model - SMH-20

Conveyor Belt

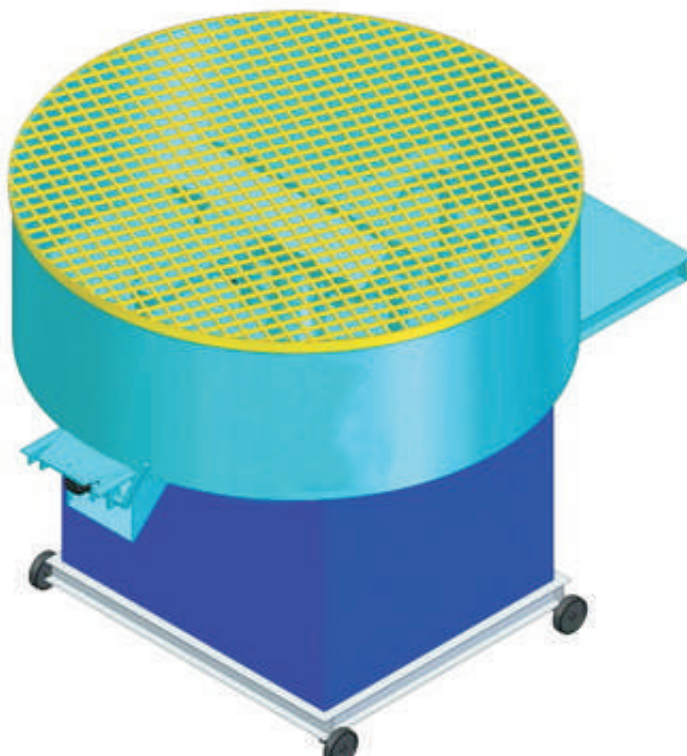


Model - SMH-20 - Technical Specification

Total Power Required	2 Hp / 1.5 KW
Capacity	3000 Kg Per Hour
Gear Box	30x1 RPM

Model - SMH-21

Refractory Castable Pan Mixer



Model - SMH-21 - Technical Specification

Mixing Capacity	100 kg	200 kg	300 kg	400 kg	500 kg
Pan Dia.	1000 mm	1200 mm	1500 mm	1650 mm	1800 mm
Pan Height	450 mm	450 mm	450 mm	500 mm	500 mm
Electric Motor	5 HP	7.4 HP	10 HP	15 HP	20 HP
Gear Box	Small	Big	Big	Heavy	Heavy
Hydraulic Oil	10 Ltr	15 Ltr	15 Ltr	20 Ltr	20 Ltr
Starter	MCB	MCB	MCB	MCB	MCB
Base Plate	10 mm	12 mm	12 mm	15 mm	15 mm
Side Wall Plate	6 mm	6 mm	6 mm	6 mm	6 mm
Under Liner	4 mm	4 mm	4 mm	4 mm	4 mm
Safety Guard Auto Stop	As Per Requirement				
Mixing By	4 Fix Heavy Temper Blade				
Discharge	Manual Door Open				
Trolley Wheel	4 Wheels				

Model - SMH-22

Concrete Mixer



Model - SMH-22 - Technical Specification

Mixing Capacity	1/2 Bag & 1 Bag
Motor	3 HP & 5 HP
Diesel Engine	5 HP & 7.5 HP
Drum speed	25 - 30 RPM

Model - SMH-23

Refractory Fire Bricks Cutting Machine



Model - SMH-23 - Technical Specification

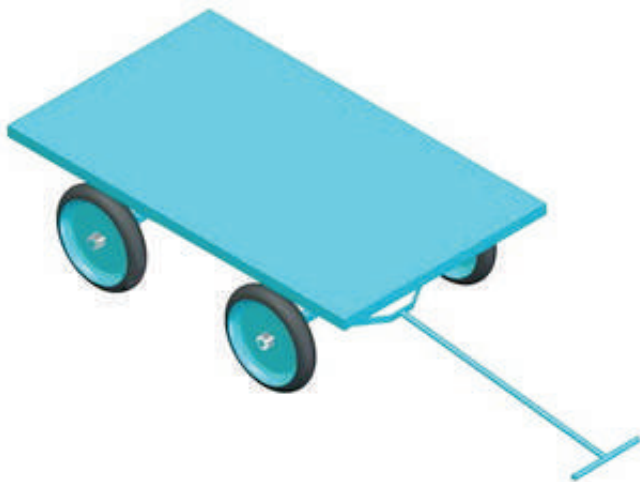
Table Size	30 x 39 x 33 inch
Trolley Size	20 x 12 inch
Cutting Wheel Size	16 x 18 inch
Cutting Capacity	24 x 12 x 9 inch
Motor	7.5 HP
Starter System	Star Delta
Job Cutting Height	Can Be Adjustable
Dust Collector Blower	As Per Requirement
MS Flanges	2 Side Above Wheel
Sliding Trolley	Aluminium
Water Coolent Tank Capacity	50 Ltr (HDPE)
Water Coolent Pump	0.25 HP



S.M. HYDRAULIC

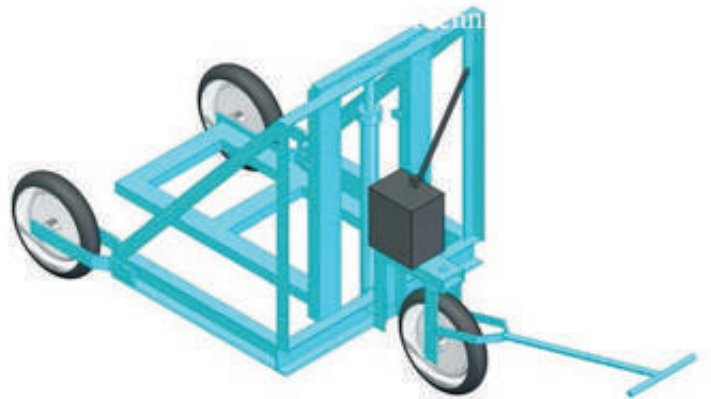
Model - SMH-24

Pallets Trolley



Model - SMH-25

Hydraulic Trolley



Model - SMH-26

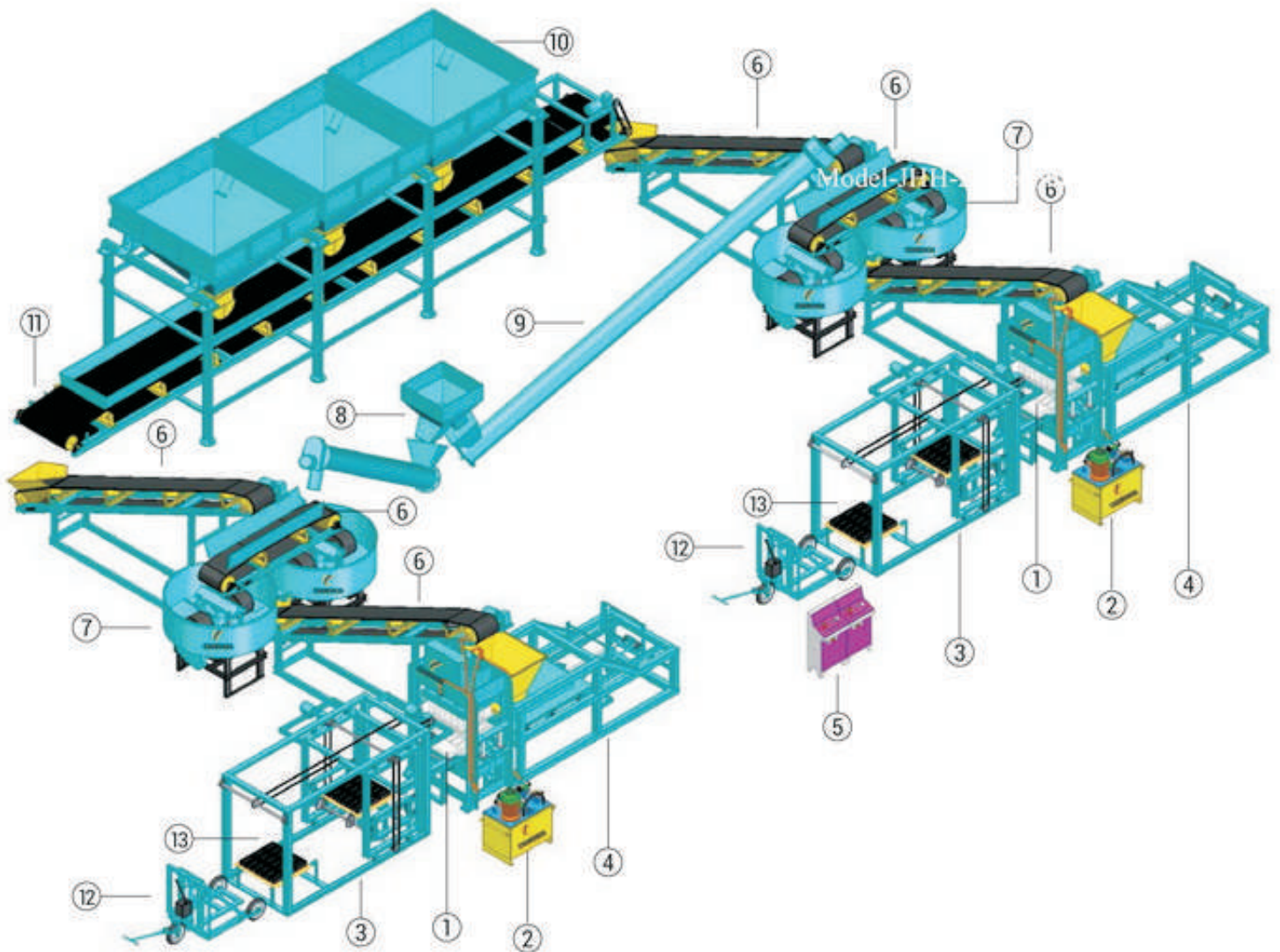
Cycle Trolley



Model - SMH-27

Borrow Trolley





Technical Specification

1	Main Hydraulic Press Machine	8	Cement Hoper
2	Hydraulic Power Pack	9	Screw Conveyor
3	Auto Plate Stracker System	10	Material Bin
4	Material Feeder	11	Batching Conveyor
5	PLC Pannel	12	Hydraulic Trolley
6	Conveyor Belt	13	Bricks Pallet
7	Roller Pan Mixer		



S.M. HYDRAULIC

**Mfg & Exporter of Fully Automatic Fly ash Bricks & Paver Block Machine
All Type of Hydraulic & Construction Machinery & MS / Rubber Mould**

 **Panchasar Road, Morbi-363 641. Gujarat**

 **98253 13924**  **90995 17581**

 **smhydraulic12@gmail.com**  **www.smhydraulic.com**